

Pragmatic Principles,
Sustainable Solutions,
Award Winning Architecture,

P M A



Established in 1989, our practice flourished under the guidance of its founder, Paris Magdalinos. Years of hard work and the successful delivery of design solutions has led to significant growth. Today, the company is a well-managed business with a board of directors setting the strategic framework supported by a skilled, talented and technical team. We are dedicated to design.

PMA's integrated offering combines a vast array of services including architecture, environmentally sustainable design, interior, urban and heritage design, strategic facility planning, project management, landscape architecture, value management and cost analysis.

Architecture has always been about the whole rather than the part at PMA. People and spaces, innovation and implementation - few other words are needed to capture our collective focus. For over almost two decades our team has been working together to create solutions for the people we help - from landowners, government agencies and educational institutions, to businesses both large and small. Our efforts and vision have ensured local, national and international acclaim - but far more importantly the work has resulted in a plethora of people happily living, working and visiting the spaces we have created.





PMA's design-driven philosophy is recognised by many industry accolades, resulting in our ongoing success.

We have been the recipient of many architectural awards including two prestigious Supreme National Awards for Architecture, over 60 NZIA Regional Awards for Architecture and Colour, seven Art Deco Trust Supreme Awards for Heritage of the Region, multiple Master Builders Commercial Awards and various other industry awards. Our team is humbly proud of this success.

It is this track record plus our honest, open dialogue with stakeholders that ensures our projects are completed successfully.

**Our solutions are dynamic;
fundamentally design-driven yet functional and practical.**

The proactive, innovative approach we bring to building design and project management adds value to the design and construction process - for the duration of the project, and beyond.







Environmentally sustainable design is a cornerstone of our philosophy.

PMA's solutions blend wants and needs with practical answers to create efficient, resource-smart, sustainable and intelligent spaces. We are committed to promoting the highest standards of environmentally sustainable and responsible buildings.

This is not just design speak.

We have an environmental protocol in place for all current and future projects. Our commitment to Carbon Zero Certification involves working alongside the New Zealand Green Building Council plus other national and international green building industry partners, to promote and implement sustainable building strategies, both domestically and internationally.



The best architecture comes from an amalgamation of ideas, disciplines and good communication.

Every day we demonstrate this by drawing on our collective expertise. Mutual success is achieved by working in partnership with our clients. Transparency is paramount.

PMA is committed to providing professional services consistent with the requirements of AS/NZS/ISO 9000. This has enabled our practice to grow and diversify with a global vision.

Our true synthesis of ideas and actions challenge preconceptions and delivers dutiful, committed solutions.



Client Westpac Bank/Waiohiki Marae/Michael Hill Jewellers/ Housing New Zealand/Gahagans Pharmacy/Kelt Capital – Merchant Finance/Emerald Vacation Group/National Bank/Fonterra/ Air New Zealand/Inland Revenue Department/ Napier Girls High School/The County Hotel/ Ministry of Economic Development/Hawke's Bay Club/Hawkin Construction/Guardian Health Care/ Palmerston North Girls High School/Williams and Kettle/Mosgjel Presbyterian Church/ Mainzeal/Dominion Salt/Willis Toomey Robinson/Te Aute College/Sainsbury Logan Williams/ Horizon Homes/Woodford House/Malcolm Flowers Insurance/The Church of Jesus Christ of the Latter Day Saints/Stewart Financial Services/ St Mary's – Gisborne/EC Credit Control/Airways Corporation of New Zealand/St John Ambulance/St Luke's Aged Care/Presbyterian Support/ Department of Corrections/Ministry of Justice/ William Colenso College/HortResearch/Napier City Council/Parliamentary Services/Omahanui Aged Care (RPA)/Havelock North Community Centre/ St Oran's College/Eskdale School/Eastern Institute of Technology/Marewa School/Primeproperty Group/Greenworld/Winslow Properties/Mackersey Development/Sacred Heart Church Hastings/ St Luke's – Havelock North/ Ocean Boulevard/UFS Dispensary/McClurgs Jewellers/Quayhaven/ Big Save Furniture/Wallace Development Company Limited/Herbert Construction/Farmers Trading Company/Gemco Group/Jet Gym/Your Solutions/Beacham Jaguar/Blair and Co/Band **List**





Our reputation; internationally focused architectural practice founded on award-winning design.



We have professional representation on urban design committees and panels, we advise on architectural/CAD education for tertiary institutions.

PMA works locally and nationally with the New Zealand Institute of Architects.

At a governance level, our directors have extensive business experience and all hold other directorships across the business and community spectrum.

As signatories of the New Zealand Urban Design Protocol, we are required and eager, to impart a holistic approach to architecture, considering all the implications of built forms - be they social, cultural or environmental.

GOVERNANCE

Nic Magdalinos

Managing Director
BA, MinstD, NZIA Affiliate



Working to integrate a culture of obsessive improvement at PMA, Nic's drive assures continued growth and the realisation of the company's strategic goals.

Nic is the key point of contact across PMA's entire client portfolio, and is currently working locally and nationally with public and private clients. Nic's role as a dedicated representative of the client team ensures service delivery meets client expectation. His experience across the industry spectrum and successful project delivery has seen enduring relationships between clients and PMA fostered and grown.

Educated in the liberal arts and business, Nic has a strong commitment to corporate governance.

Nic sits on the Management Board of Designgroup New Zealand, is Chairman of the Board for Napier Inner City Marketing, The President of the Hawkes Bay Gisborne Chapter of the Property Council of New Zealand and acts as a strategic consultant to various local and national entities.

Andrew Morrison

Chairman - Non Executive Director
L.L.B



Involved with Paris Magdalinos Architects since its inception, Andrew has an impressive record in company and commercial law having held senior partner positions in leading Wellington and Hawke's Bay firms.

Andrew is a Past-President of the Hawke's Bay District Law Society, holds Directorships, and has chaired the Board of a range of companies. Andrew has acted as an adviser to national, professional and consultancy groups and individuals on statutory and industry compliance regimes. And as an adviser to public and private corporate clients, including a wide range of New Zealand's companies and business ventures.

Currently the Commodore of Royal Port Nicholson Yacht Club, Andrew sits and director on numerous companies.

Evan Davies

Non Executive Director
BTP, MSc, MPhil



Evan Davies is Managing Director of Todd Property Group Limited a subsidiary of the Todd Corporation. Todd Property Group is a large-scale, broad based property company. Current projects include - Stonefields, Long Bay and the Ormiston Town Centre. From 1996 until 2007 Evan was the founding Managing Director of gaming and entertainment company, SKYCITY Entertainment Group Limited. While at SKYCITY Evan oversaw the purchase, design and development of several casinos in New Zealand and Australia including Auckland's famous Sky Tower and associated SKYCITY Casino complex.

A qualified planner, Evan has wide spread interests in property development, city planning and urban issues as well as other business interests in farming and viticulture. Evan sits on the board of the Waterfront Development Agency, the Capital Committee of the National Health Board, and two major charitable trusts.



MANAGEMENT

Nic Magdalinos

Managing Director
BA, MInstD, NZIA Affiliate



Working to integrate a culture of obsessive improvement at PMA, Nic's drive assures continued growth and the realisation of the company's strategic goals.

Nic is the key point of contact across PMA's entire client portfolio, and is currently working locally and nationally with public and private clients. Nic's role as a dedicated representative of the client team ensures service delivery meets client expectation. His experience across the industry spectrum and successful project delivery has seen enduring relationships between clients and PMA fostered and grown.

Educated in the liberal arts and business, Nic has a strong commitment to corporate governance.

Nic sits on the Management Board of Designgroup New Zealand, is Chairman of the Board for Napier Inner City Marketing, The President of the Hawkes Bay Gisborne Chapter of the Property Council of New Zealand and acts as a strategic consultant to various local and national entities.

Brian Elliott

Principal Architect
B.Arch (Hons), LFNZIA (Hons), PPNZIA



With over 35 years' experience working for clients throughout New Zealand and in Australia, Brian is a recognised expert in master planning in the tertiary education sector.

Brian has completed significant research on benchmark examples of vocational education campus development, focusing on the quality of teaching environments, the social wellbeing of students, new education environments and how best outcomes can be applied to New Zealand Polytechnics.

He has vast experience in the delivery of major architectural projects, from large-scale residential developments to multi-storey commercial projects to entire tertiary campus projects. He has significant expertise in the management of multi-disciplinary design teams, including 'fast-track' project delivery.

Brian is the founding Chairman of Designgroup New Zealand. He has served the New Zealand Institute of Architects in a number of capacities and was National President from 1997 to 1999.

John Blair

Lead Design Architect
B.Arch (Hons) FNZIA



John is an experienced and proven architect of public buildings. He is the recipient of numerous design awards and accolades, both in New Zealand and internationally. His ability to articulate a client brief into functional, responsive, on-budget architecture, galvanises his place on any project team.

Designing for environments as diverse as the Pacific Islands to the Southern alps, John infuses his architecture with a solid empathy of the site, creating notable buildings that evoke a strong sense of place.

He has worked on projects as varied as town centers and urban regeneration to winery buildings and luxury hotels.

John is one of New Zealand's acclaimed architects, clearly recognised for his uncompromising approach to quality.

ASSOCIATES

Ezra Kelly

Senior Architect
BBSc (Hons) B.Arch (Hons) ANZIA
Greenstar Accredited Professional



With 15 years experience in both New Zealand and Europe, Ezra is a Greenstar Accredited Professional, and PMA's environmental sustainable design leader.

He brings design flare within the bounds of intelligent, sustainable technical initiatives across a broad range of projects. These include educational/institutional facilities, together with commercial, retail and hospitality projects.

Ezra touches all phases of the process, from master/concept planning through to contract administration.

He is currently working as environmental consultant for a luxury resort development in the Maldives, as well as integrating environmental sustainable practice into marae design, Papakainga land developments, and educational/institutional projects.

Ian Seddon

Senior Architect
NZCD



Ian is an indispensable member of our leadership team.

With three decades of experience in architectural design and construction management, Ian's undeniable wealth of knowledge can leverage any project type.

Ian worked with Paris for 25 years, and is ideologically aligned to the award winning service PMA is renowned for.

Passionate about design and documentation, Ian is able to translate design and articulate it into built form.

Ian is experienced in institutional and public buildings, high end residential design.

Chris Ainsworth

Project Leader
NZCD



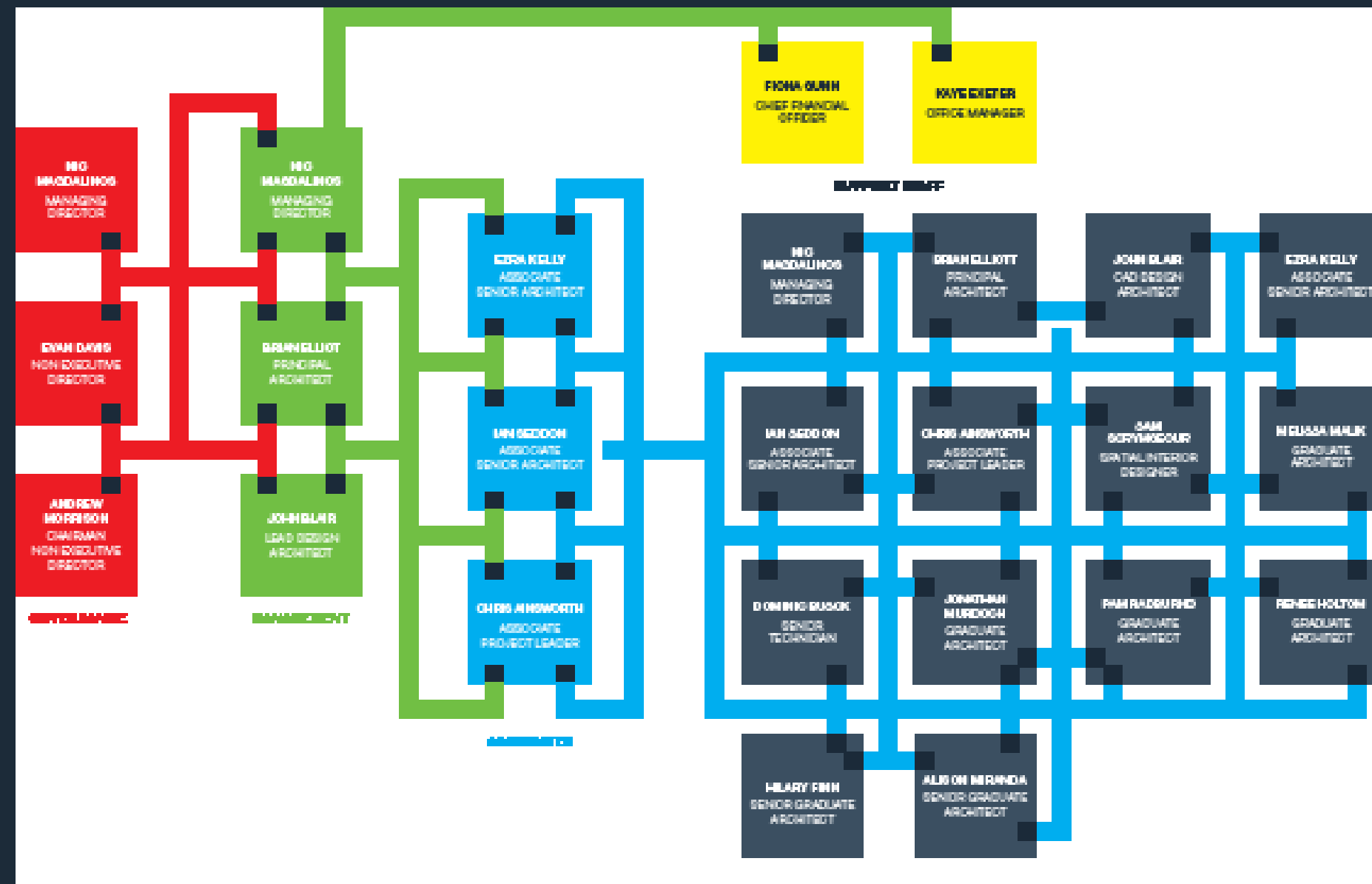
Chris is passionate about quality architectural and urban design.

His 16 years experience working in some of New Zealand's leading architectural firms is complemented with excellent technical and management skills. He aptly coordinates consultants, documentation and contract administration.

Expertise in conservation and heritage design has ensured leadership of several high profile projects in Napier.

Chris is currently a member of the Napier City Council Urban Design Group for Ahuriri and project leader of The County Hotel development, The Christchurch International Airport Control Tower and various high end residential projects.

ORGANISATIONAL STRUCTURE



designgroup NEW ZEALAND

Design Group New Zealand

PMA is a member of Designgroup New Zealand, a nationwide association of independent architectural practices working together to provide superior quality of services, a wider range of expertise and an extended resource capability to clients throughout New Zealand.

Designgroup has nine offices plus three consulting practices in eight locations employing over 120 staff, making it one of the New Zealand's largest architectural practices. Designgroup provides consultancy in architecture, interior, urban and landscape design, heritage architecture and planning. Designgroup offers a unique mix of specific skills coupled with direct, local hands-on leadership and support. A key strength of Designgroup is its ability to work as a team; key to successful development.



Pragmatic principles, sustainable solutions, award winning architecture

DESIGNGROUP NZ
PARIS MAGDALINOS
ARCHITECTS



PO Box 790 - 93 Station St Napier, Hawke's Bay, New Zealand
Phone: + 64 6 835 6173 | Facsimile: + 64 6 835 4381
info@pmarchitects.co.nz | www.pmarchitects.co.nz